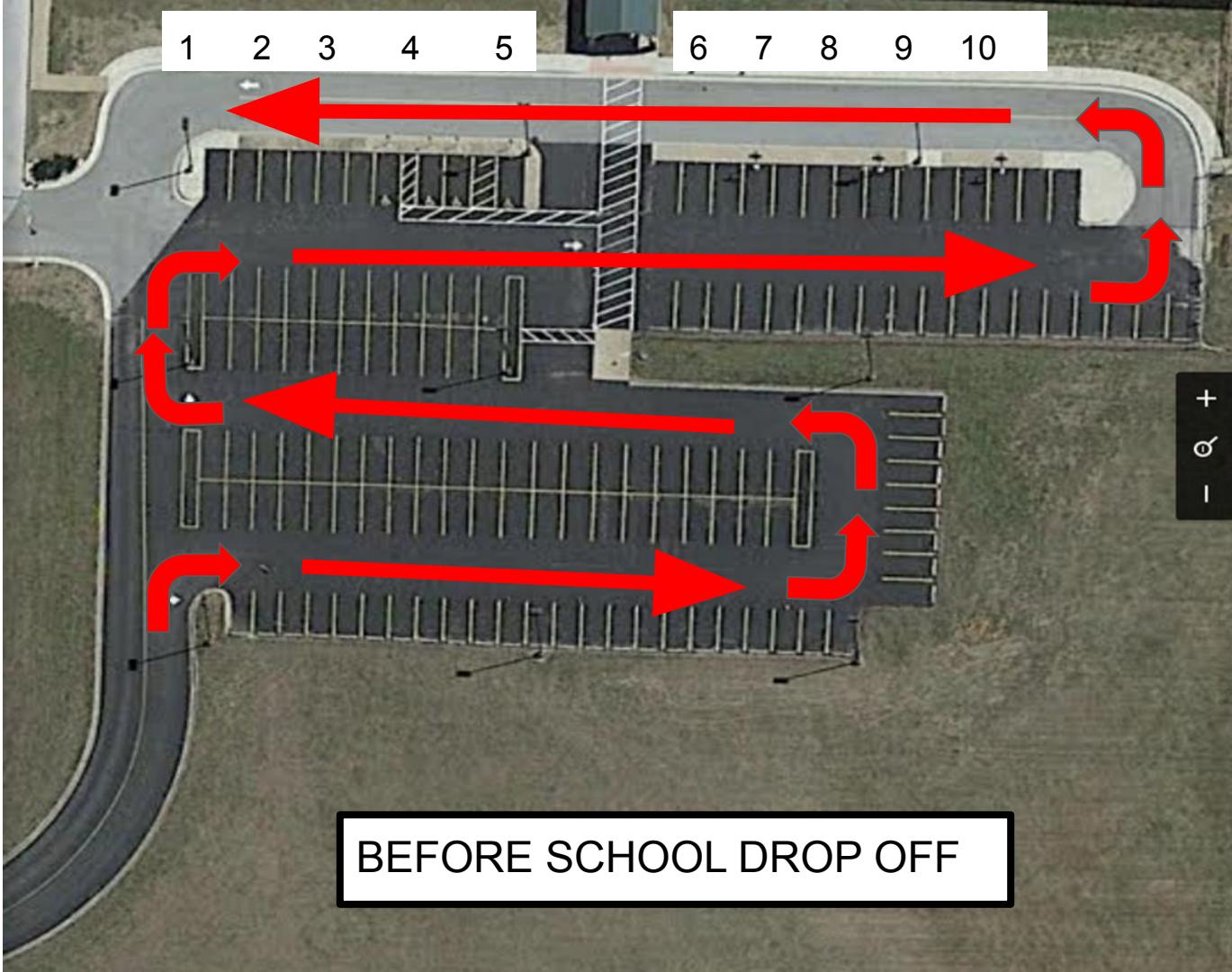


BEFORE SCHOOL CAR DROP OFF

- 1: If possible, arrange your seating so your child exits from the passenger side of the vehicle.
- 2: Always pull forward as much as possible (don't stop at the #5 cone if you can pull forward to #1-4).
- 3: Students may only exit the vehicle at the drop off cones. Please do not allow your child to exit your vehicle if they must cross traffic in order to reach the building.
- 4: Please do not park and walk up to the school entrance during car drop off.



1 2 3 4 5

6 7 8 9 10

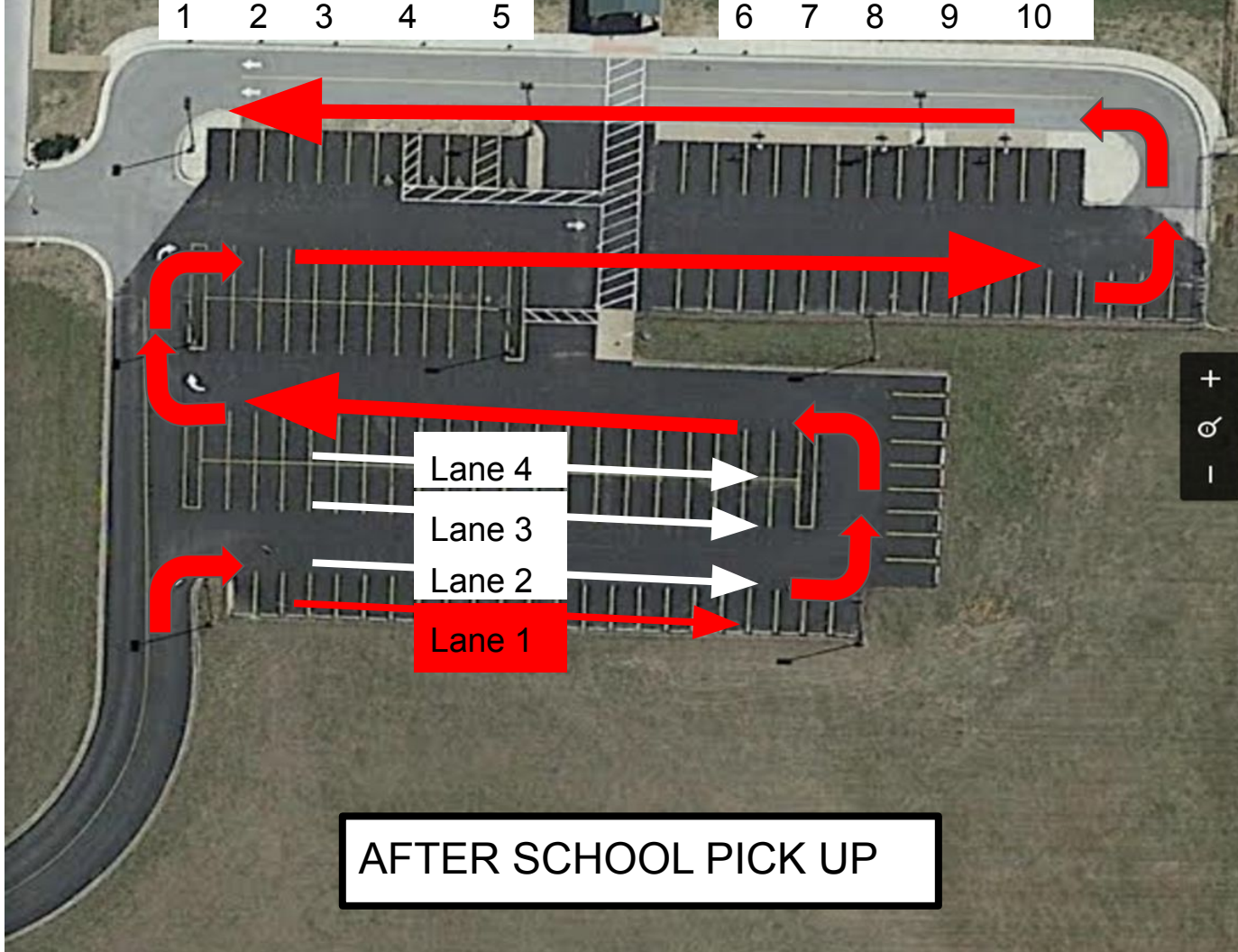
BEFORE SCHOOL DROP OFF

+
○
-

AFTER SCHOOL CAR PICK UP

- 1: Arrange your vehicle seating so your child may load from the passenger side of the vehicle.
- 2: Encourage your child to buckle themselves or move beyond the cones/pick up zone if you need to buckle them.
- 3: LANES 2-4 are used as needed. Please follow directions from the School Traffic Team and posted signs as to which lane to enter.
- 4: Car tags must hang on the rear view mirror. Please write your child's first and last name on the car tag as large as possible with a Sharpie.

1 2 3 4 5 6 7 8 9 10



AFTER SCHOOL PICK UP

Car Tag

Example:

Reynolds
LAST NAME

-Malcolm-4

-Zoe -2

-Inara -K

FIRST NAME(S) GRADE(S)