

Welcome to Ozark Middle School



OMS 101

Chromecamp



Chromebooks

Digital Citizenship

Safe Online Learning

Tiger Focus

- We believe in providing enrichment and re-teaching opportunities to meet students' needs.
 - Tiger Focus is 35 minutes at the end of the school day.
 - During this time, teachers have specially designed lessons to meet all students' learning needs.

We Won't Give Up On Your Child

- Before-school assistance: 7:20-7:35
- Tutoring: 3-5, Monday-Thursday
- STOMP
- Continued Learning Opportunity

To the Last Day of School

May 22, 2020



School Arrival

- Students can be dropped off at 7:20 a.m.
- If needing to drop off earlier, the student will need to be enrolled in North Tiger Care (6th grade only).
- Students will go immediately to the their assigned gym if they arrive before 7:35.
- Breakfast (\$1.30) is served from 7:25-7:35. Students will go directly to the cafeteria if they want breakfast.
- Students must be in their 1st period class by 7:40 a.m. Anyone who arrives after 7:40 will be considered tardy and must check into the office.

Tardy/Check-In/Out Policy

- Tardy bell rings at 7:40. If your child arrives after 7:40, you will need to call, send a note, or check them in at the office.
- When checking students out, you must come into the front office.
- For student safety, anyone entering the building must come in through the office.

Morning Drop Off Procedures

- All traffic will enter through the main entrance.
- Southbound traffic will stay to the left.
- Northbound traffic will stay to the right.

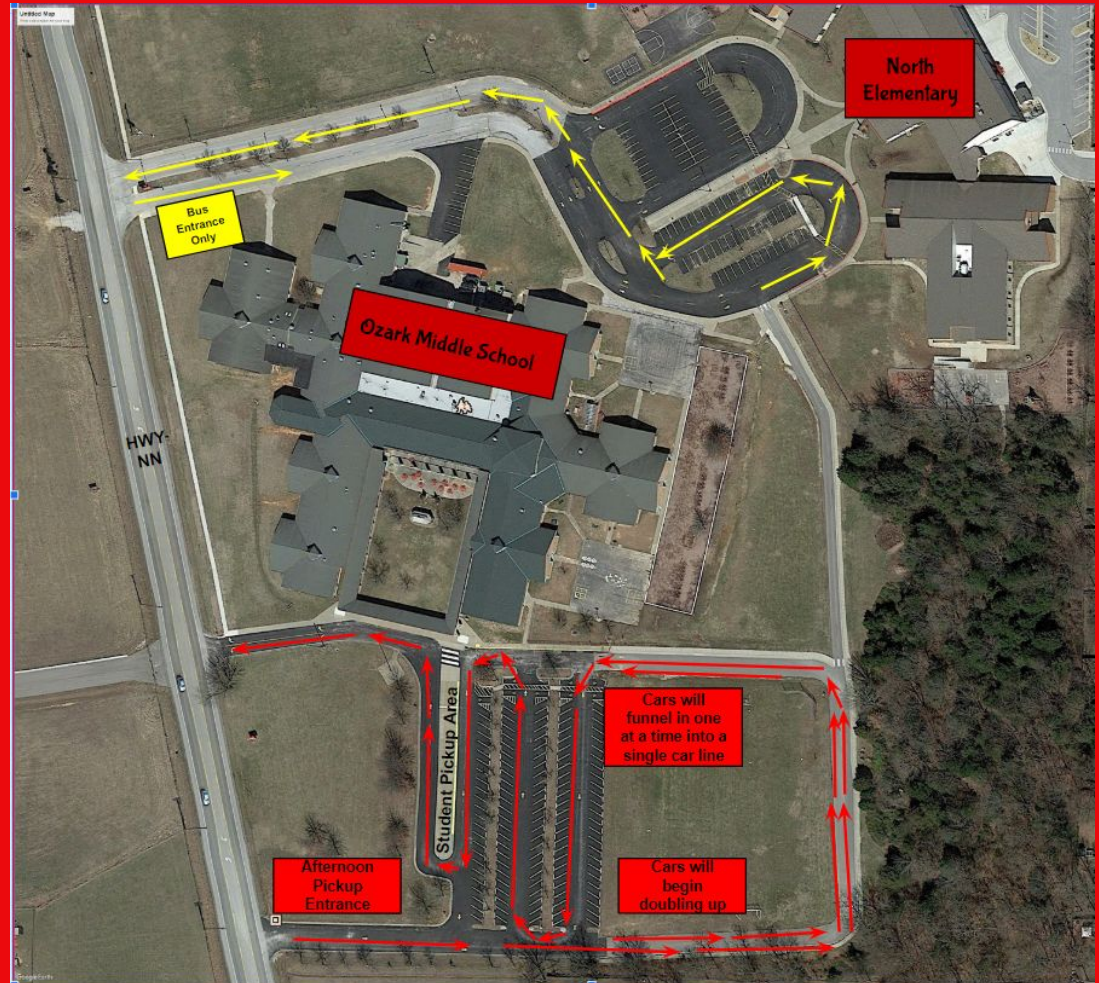


Dismissal Procedures

- School will dismiss at 2:40 pm Monday – Thursday.
- Fridays – Dismiss at 1:40pm (Teacher PLC).
- All tutoring and Tiger Care students will meet in the cafeteria.
- Parent Pickup – please try to refrain from lining up until 2:30 (1:30 Friday) to allow for traffic and visitors to access the building and exit the parking lot.

Afternoon Pickup

- All traffic will enter through the main entrance.
- All traffic will serpentine around the lot.
- Traffic will begin doubling up as you circle the field.



Bus Transfer at the High School

- All busses will transport to the high school.
- At the high school, some students will need to transfer to the bus that takes them home. Transfer busses are close in proximity to ensure safety.
- OMS students will ride the bus with junior high and high school students but will sit separate from older students towards the front of the bus.

TEAMING

- Students are placed on a core team.
- Each team consists of a ELA, Math, Science, and Social Studies teacher.
 - Extreme
 - Incredibles
 - Ozone
 - Warriors
 - A-Team
 - Imagineers
 - Ninjas
 - Tiger Power
- These teams are situated together in the same pod to maintain close proximity.
- There is a lot of pride among each team to create a family atmosphere.

Schedule

Monday - Thursday

Students May Enter Building @ 7:20 AM

Period	Begin	End
1st Period	7:40	8:29
2nd Period	8:32	9:20
3rd Period	9:23	10:11
4th Period	10:14	11:02
5th Period/7th Lunch	11:02	12:21
6th Period/6th Lunch	12:25	1:12
7th Period	1:15	2:03
Tiger Focus (8th Period)	2:06	2:40

Friday

Student May Enter Building @ 7:20 AM

Period	Begin	End
1st Period	7:40	8:25
2nd Period	8:27	9:12
3rd Period	9:14	9:59
4th Period	10:01	10:46
5th Period/Lunch	10:46	12:05
6th Period/6th Lunch	12:07	12:52
7th Period	12:54	1:40

Lunch Monday - Thursday

	Begin	End
First Lunch	11:02	11:27
Ninjas Imagineers		
Second Lunch	11:29	11:54
Tiger Power A-Team		
Third Lunch	11:54	12:19
Extreme Incredibles		
Fourth Lunch	12:21	12:46
Ozone Warriors		

Lunch Friday

	Begin	End
First Lunch	10:46	11:11
Ninjas Imagineers		
Second Lunch	11:13	11:38
Tiger Power A-Team		
Third Lunch	11:38	12:03
Extreme Incredibles		
Fourth Lunch	12:05	12:30
Ozone Warriors		

D-Card

Discipline Signatures:

- Digital Handbook
- Signatures are tracked in each subject area.
- Signatures are given for minor infractions within class.
- Each quarter will be a clean slate.
- Positive rewards are given for no signatures.
- Parents can monitor these.
- If your child receives a signature you will receive a phone call.

ELA 1ST QUARTER			MATH 1ST QUARTER		
Date	Initial	Offense	Date	Initial	Offense
30 minute detention with teacher			30 minute detention with teacher		
1 hour after school detention			1 hour after school detention		
Office Referral and ISS			Office Referral and ISS		

Cell Phones

- Students can call home from the office.
- Cell phones are not allowed to be on during school hours.
 - Students can focus on academics.
 - Decreases social pressures.
 - Ensures student privacy.
- Many students do not even bring their phones to school to ensure the phone is not lost, stolen, or damaged.

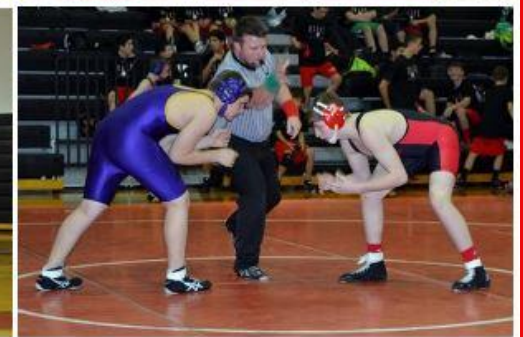
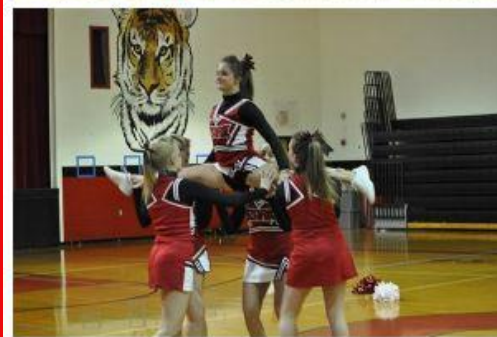
PTA

- OMS has an active PTA.
- Parents are encouraged to volunteer.
 - Class volunteers
 - Book Fair
 - Teacher Appreciation
 - T-shirts



Athletics and Clubs

- Athletics and clubs encourage student involvement.
- Athletics are available to 7th grade students.
- Clubs include:
 - Science Olympiad
 - Math Olympiad
 - Speech & Debate
 - Robotics
 - STUCO



Questions?

Tour of the building
to follow.